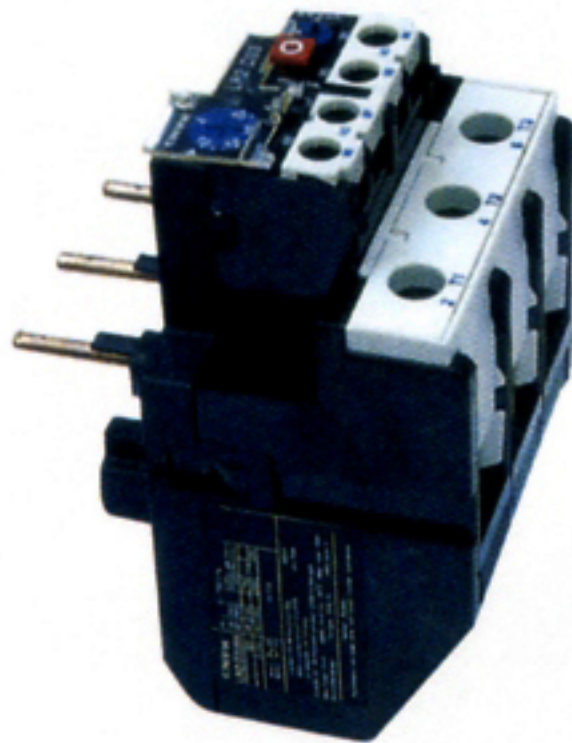
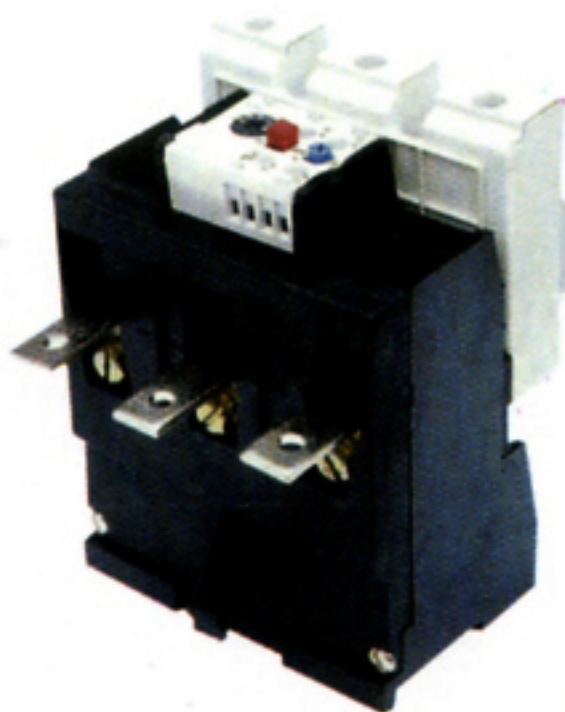


LR2-D33 32 ~ 80A

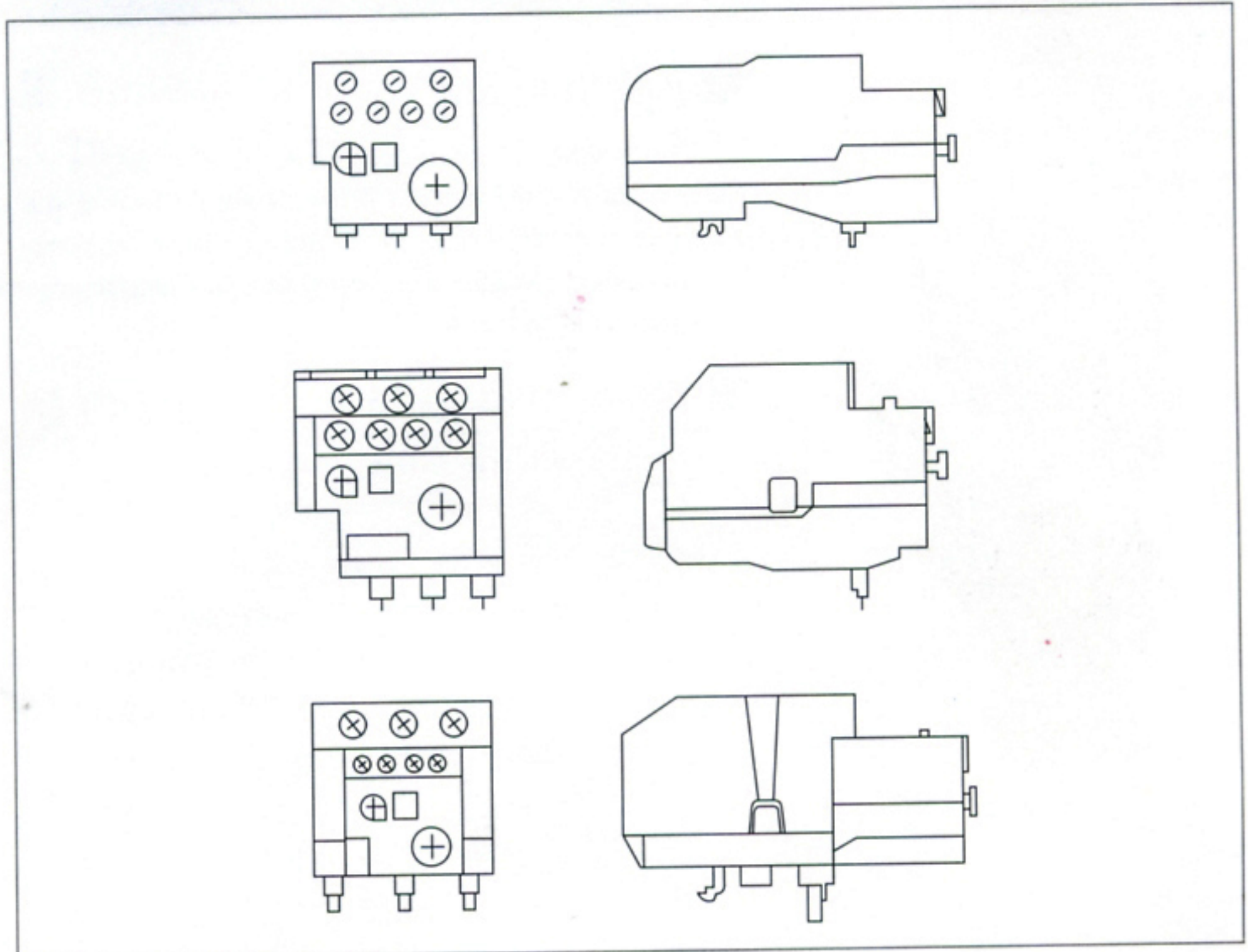


LR2-D33 80 ~ 93A

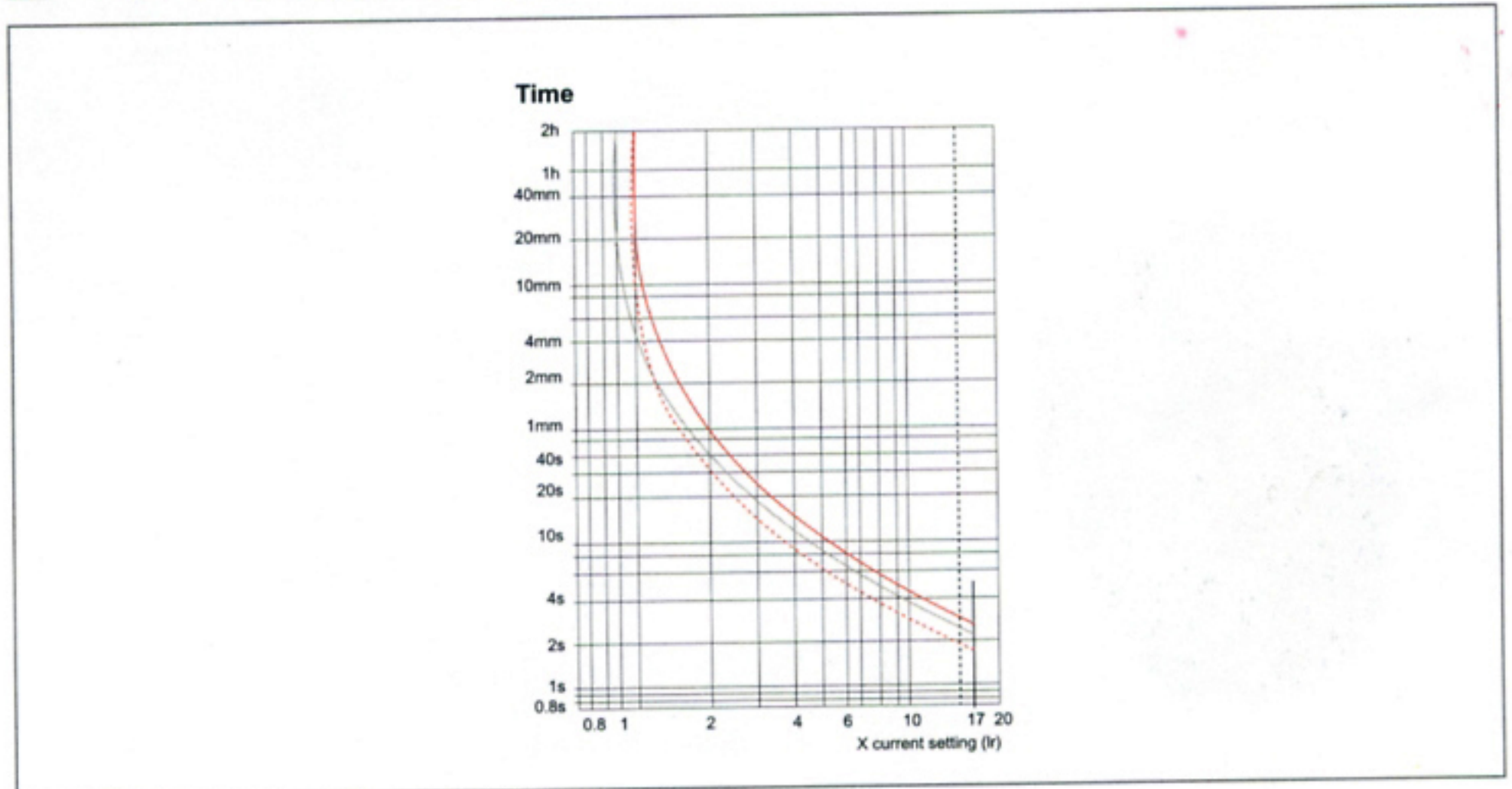


3UA 62
3UA 66
3UA 68

■ Dimensions



■ Performance curve



3UA Thermal Relay

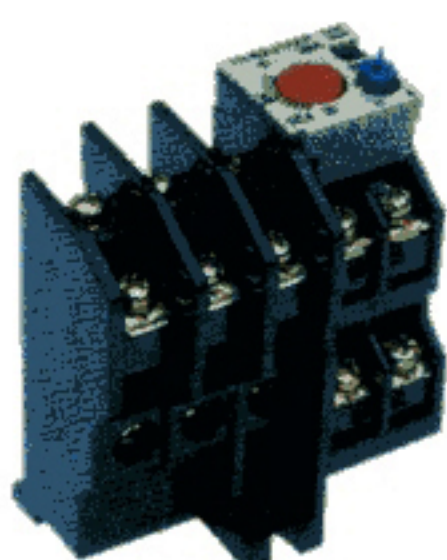
■ Application

3UA thermal relay is suitable for using in power system with AC 50Hz, rated operation voltage up to 660V and 1000V, in main circuit, current from 0.1A to 630A. It is used to protect AC three phase asynchronous motor against overload and phase failure.

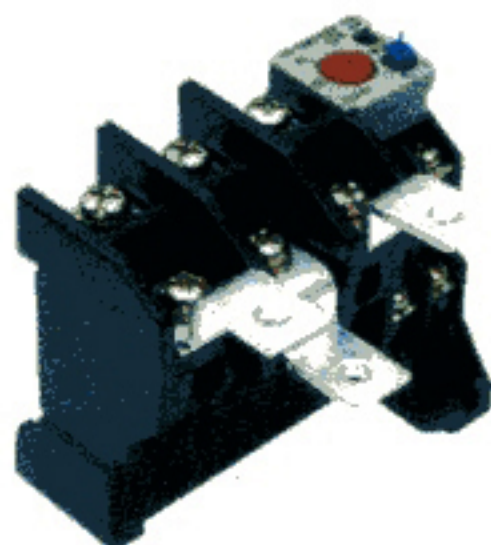
The current setting value can be regulated and the setting current values of many



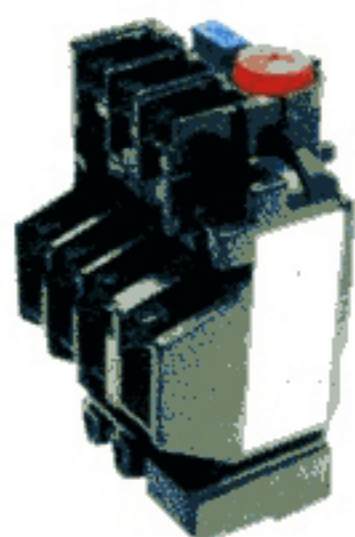
JRS5(TH-K)12



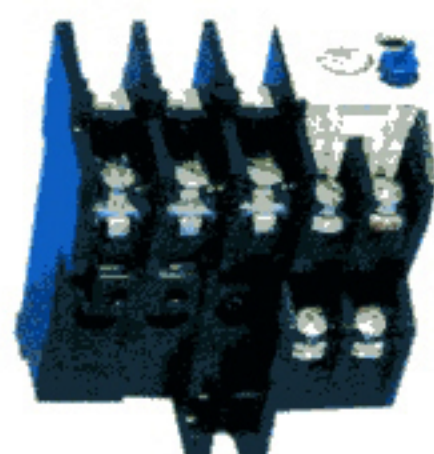
JRS5(TH-K)20



JRS5(TH-K)60



JRS5(TH-N)12



JRS5(TH-N)20

thermal elements are intercrossing overlapping arrangement, for easy selecting by the customers from -25°C to $+55^{\circ}\text{C}$ air temperature as the products have temperature compensating. The relays have the test push-button for breaking NC contacts, the operating indication and free trip characteristics. The items conform to IEC292-1, IEC337-1 & VDE0660.

Specifications

| Type | Rated operating current (A) | Rated insulation voltage (A) | Setting current range (A) |
|-------|-----------------------------|------------------------------|--|
| 3UA50 | 12.5 | 660 | 0.1 - 0.16, 0.16 - 0.25, 0.25 - 4, 0.32 - 0.63, 0.63 - 0.1, 0.8 - 1.25, 1 - 1.6, 1.25 - 2, 1.6 - 2.5, 2 - 3.2, 2.5 - 4, 3.2 - 5, 4 - 6.3, 5 - 8, 6.3 - 10, 8 - 12.5 |
| 3UA52 | 25 | 660 | 0.1 - 0.16, 0.16 - 0.25, 0.25 - 4, 0.32 - 0.63, 0.63 - 0.1, 0.8 - 1.25, 1 - 1.6, 1.25 - 2, 1.6 - 2.5, 2 - 3.2, 2.5 - 4, 3.2 - 5, 4 - 6.3, 5 - 8, 6.3 - 10, 8 - 12.5, 10 - 16, 12.5 - 20, 16 - 25 |
| 3UA54 | 32 | 660 | 4 - 6.3, 6.3 - 10, 10 - 16, 12.5 - 20, 16 - 25, 20 - 32 |
| 3UA58 | 80 | 1000 | 16 - 25, 20 - 32, 25 - 40, 32 - 50, 40 - 57, 50 - 63, 57 - 70, 63 - 80 |
| 3UA59 | 63 | 600 | 0.1 - 0.16, 0.16 - 0.25, 0.25 - 4, 0.32 - 0.63, 0.63 - 0.1, 0.8 - 1.25, 1 - 1.6, 1.25 - 2, 1.6 - 2.5, 2 - 3.2, 2.5 - 4, 3.2 - 5, 4 - 6.3, 5 - 8, 6.3 - 10, 8 - 12.5, 10 - 16, 12.5 - 20, 16 - 25, 20 - 32, 32 - 50, 40 - 57, 50 - 63 |
| 3UA62 | 180 | 660 | 55 - 80, 63 - 90, 80 - 110, 90 - 120, 110 - 135, 120 - 150, 135 - 160, 150 - 180 |
| 3UA66 | 400 | 1000 | 80 - 125, 125 - 200, 180 - 250, 200 - 320, 250 - 400 |
| 3UA68 | 630 | 1000 | 320 - 500, 400 - 630 |

JRS5(TH-K/N) Thermal Relay

Application

The thermal overload relays are suitable for overload protection of AC motor operated in 8-hours duty or uninterrupted duty.

The overload protected AC motor with frequency 50Hz, voltage up to 660V, current up to 40A.

Several functions provided by these relays, such as phase-failure protection, temperature compensation, ON/OFF indication and manual / automatic reset. The relays comply with IEC292-1 standard.

Specifications

| Type | Plug in AC contact | Rated current of thermal element (A) | Setting current range (A) |
|------------------|--------------------------|--|--|
| JRS5-15 (TH-K12) | CJX5 10 11 CJX5 12 18 | 0.24,0.35,0.5,0.7,0.9,1.3, 1.7,2.1,2.5,3.6,5,6.6,9,11 | 0.2-0.28 0.28-0.42 0.4-0.6 0.55-0.85 0.7-1.1 1-1.6 1.4-2 1.7-2.1 2-3 2.8-4.4 4-6 5.2-8 7-11 9-13 |
| JRS5-20 (TH-K20) | CJX5 20 21 CJX5 25 35 | 2.1,2.5,3.6,5,6.6,9,11, 15,19,22,29,35 | 1.7-2.1 2-3 2.8-4.4 4-6 5.2-8 7-11 9-13 12-18 16-22 18-26 24-34 30-40 |
| JRS5-60 (TH-K60) | CJX5 50 65 CJX5 80 95 | 42,54 | 34-50 43-65 |